

# GUIDE TO PROPER WASTE SEPARATION



IN ENGLISH



Daily Sustainable

# Why waste separation is explained in different languages

## CEM IS NOW FOR EVERYONE!

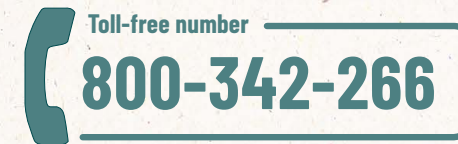
To reach all those living in the municipalities where CEM operates, we have explained waste collection in six languages: Italian, English, French, Spanish, Chinese, and Arabic.

The main guidelines on waste collection are now also available to those living in foreign communities.

The translated information concerns the main door-to-door collections managed by CEM, but also the rules of the Collection Centers (formerly Ecological Platforms) and the street cleaning service. The goal we have set is to reach everyone, each in the language he or she knows best, with the aim of increasingly improving separate collection and the spreading of good environmental practices in our municipalities.

## CONTACT CHANNELS

The new toll-free toll-free number to use is



MONDAY TO FRIDAY: 9 A.M. - 12:30 P.M. and 2:30 P.M. - 5 P.M.  
SATURDAY: 9 A.M. - 12 P.M.

The new Web site to visit is

[www.cemambiente.it](http://www.cemambiente.it)

To find plenty of useful information and clear your doubts about waste collection thanks to the **WHERE DO I THROW IT?**

download free and consult

**CEMAMBIENTE APP** with all the information and the **SEARCH** function to know how to separate every kind of waste



For general info write to

[info@cemambiente.it](mailto:info@cemambiente.it)





DRY

# Undifferentiated

Undifferentiated, or dry waste, is that part of the waste that cannot be separated and is disposed of by waste-to-energy.

The goal is to make the amount of dry waste smaller and smaller. Therefore, it is necessary to be very careful about what we throw away.

**YES ✓**

**Insert:**

- TOOTHBRUSHES
- DISPOSABLE RAZORS
- CLOTHES
- SANITARY NAPKINS
- VACUUM CLEANER BAGS
- PET LITTERS
- PLASTIC COFFEE PODS
- X-RAYS
- PLASTIC CUTLERY
- CDS/DVDS
- TIGHTS
- FOOD PAPER
- BAKING PAPER
- RECEIPTS

**NO ✗**

**Do not insert:**

- GLASS PACKAGING
- CANS AND PLASTIC
- TETRA PAK
- PAPER AND CARDBOARD
- ORGANIC

**Use the specific separate collections for these wastes.**

**HOW?**

**Collection**

in semi-transparent plastic bags, (preferably semi-transparent gray)  
To be displayed on the ground.



ORGANIC

# Organic

The recovery of organic waste follows nature's cycle: it can be used for home composting or collected for disposal. In the latter case, it is then taken to plants that will turn it into compost or use it to produce biogas or other types of alternative energy.

**YES ✓**

**Insert:**

- ORGANIC MATERIAL
- FOOD SCRAPS AND LEFTOVERS
- SPOILED FOODS
- COFFEE GROUNDS AND PAPER CAPSULES
- TEA FILTERS
- EGGSHELLS, DRIED FRUIT AND SHELLFISH SHELLS
- SMALL CUT FLOWERS AND PLANTS
- CORKS
- WHITE NAPKINS AND PAPER TOWELS
- BIODEGRADABLE AND COMPOSTABLE TABLEWARE AND PRODUCTS
- ASHES FROM FIREPLACES

**NO ✗**

**Do not insert:**

Non-biodegradable waste such as

- PLASTIC BAGS
- CLOTHES
- ALUMINIUM
- PRUNINGS AND GRASS (which should be taken to your Collection Center or Ecological Platform or collected at home)

**HOW?**

**COLLECTION IN BUCKETS WITH LID AND HANDLE OR GREEN WHEELED BINS (UNI EN 840 COMPLIANT).**

**Use only Mater-bi bags and not plastic bags.**



## DOOR-TO-DOOR COLLECTION



### MULTIPAK

# Multipak

**PLASTIC** packaging (bottles, tubs, tubes...), **METAL** (cans, tins and tin cans...) and **DRINK CARTONS (Tetra Pak type)** (milk cartons, juices...) should be collected together in the Multipak, This waste is then processed and recycled as a secondary material to produce new items.

## YES ✓

**PLASTIC OR ALUMINUM PACKAGES, PACKETS, BAGS, AND TRAYS FOR:**

- FOOD - FROZEN FOODS - CLOTHING - GARDENING

**PLASTIC BOTTLES, CANS, JARS, BOTTLES FOR:**

- LIQUIDS - OIL - BEVERAGES - MILK - JUICES - YOGURT
- PET FOOD
- SOAPS - DETERGENTS - DEODORANT SPRAYS

**AND MORE..**

- TOOTHPASTE AND CREAM TUBES - EMPTY BLISTER PACKS OF MEDICINES - EMPTY BLISTERS OF BATTERIES
- EMPTY BLISTERS OF STATIONERY - PLASTIC EGG CUPS
- SMALL POLYSTYRENE PACKAGING - PE, PET, PVC, PP, PS, ABS CONTAINERS - PLASTIC/ALUMINUM FILMS - PLASTIC PLATES AND CUPS - AIR BUBBLES AND PACKING CHIPS
- FRUIT AND VEGETABLE NETS - PLASTIC/METAL HANGERS
- ALUMINUM COFFEE CAPS - PLASTIC JARS - METAL CAPS

## NO ✗

**Do not insert:**

- CANS USED TO MAKE SPARKLING WATER
- PAINT AND SOLVENT CONTAINERS LABELED T/F
- LARGE POLYSTYRENE AND CELLOPHANE CONTAINERS OR IN LARGE QUANTITIES
- TONERS
- BATTERIES.

**This waste should be taken to the Collection Center in your municipality.**

Here are other examples of waste that **DOES NOT GO** in the Multipak bag:



CLOTHES, SHOES, SLIPPERS, FABRICS



BUCKETS AND BASINS



ALUMINUM AND PLASTIC KITCHEN UTENSILS AND TOOLS



BAGS WITH MIXED WASTE



PLASTIC TOYS AND COSTUME JEWELRY



PAPER AND CARDBOARD



FOOD



MASKS

## SPECIAL POLYLAMINATES



Polylamines are packaging made up of multiple layered materials (e.g., **Tetra Pak**®), and should be placed in the yellow **Multipak** bag.

**Examples of polylamines** are cookie bags, potato chip tubes, soup packets, and vacuum-sealed coffee bags.

## HOW?

**COLLECTION IN SEMI-TRANSPARENT BAGS PREFERABLY YELLOW TO BE DISPLAYED ON THE GROUND**





GLASS

# Glass

Collected glass can be endlessly recycled to create new containers and new shapes.

It is very important to be careful not to mix it with different types of objects and materials, such as ceramic, glass ceramic, crystal, and pyrex.

## YES ✓

**Insert:**

- WHITE GLASS
- STAINED GLASS
- GLASS BOTTLES
- GLASS JARS

**Empty all these wastes from their contents.**

## NO ✗

**Do not insert:**

- CAPS
- CUPS
- PLATES
- CERAMIC VASES
- PORCELAIN
- EARTHENWARE
- NEON LAMPS
- LAMPS
- GLASS PLATES

**This waste should be taken to the Collection Center in your municipality.**

**Do not include cans and metal packaging!**

## HOW?

**COLLECTION IN BUCKETS WITH LIDS AND HANDLES OR GREY WHEELED BINS (UNI EN 840 STANDARD)**

**Do not insert plastic bags or sacks!**



PAPER

# Paper and cardboard

All salvaged paper and cardboard become new types of recycled paper and cardboard. Paper recycling can be repeated between 5 and 7 times. To optimize collection, it is best to flatten boxes to reduce volume.

**REMEMBER to no longer include containers in TETRA PAK®**

## YES ✓

**Insert:**

- JOURNALS
- MAGAZINES
- SHEETS AND NOTEBOOKS
- PAPER BAGS
- BOOKS
- CARDBOARDS
- PIZZA BOXES (NO LEFTOVERS!)
- SMALL CARDBOARD PACKAGING REDUCED IN VOLUME
- PURE CELLULOSE PAPER TOWELS
- BUS/TRAIN TICKETS

## NO ✗

**Do not include:**

- TETRA PAK® (which should be placed in the Multipak bag)
- RECEIPTS
- FOOD PAPER
- BAKING PAPER (which should be placed in the unsorted waste bag)

## HOW?

**COLLECTION IN BUCKETS WITH LID AND HANDLE OR WHITE WHEELED BINS (UNI EN 840 STANDARD) OR IN PAPER BAGS, DISPOSABLE CARTONS OR TIED PACKAGES (MAX 20KG).**

**Never use plastic bags.**





# Greenery

Collected greenery is a very valuable waste; it is taken to the composting plant and turned into compost, which is useful for fertilizing gardens and vegetable gardens.

## GREENERY

### YES ✓

Insert:

- GRASS CUTTINGS
- PRUNINGS
- LEAVES
- GARDEN PLANTS

### NO ✗

Do not include other waste such as:

- PLASTICS
- METAL
- STONES
- SOIL
- LARGE DIAMETER BRANCHES

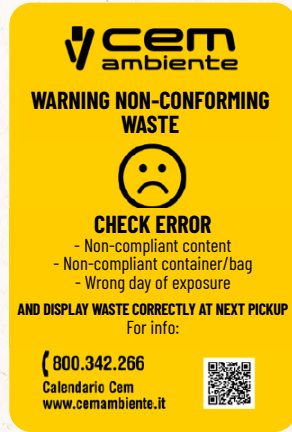
### HOW?

COLLECTION AT ECOLOGICAL PLATFORM/ COLLECTION CENTER

# Waste non-compliance

If the waste displayed is incorrect, the non-compliance sticker is applied and the waste is not picked up by the operator.

**WARNING: In case of non-compliance, the waste must be picked up and properly displayed the following week.**



## MOST FREQUENT ERRORS

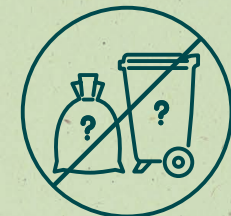
### NON-COMPLIANT CONTENT

The contents of the bag or bin are not correct



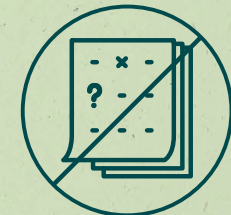
### NON-COMPLIANT CONTAINER OR BAG

The type of waste collector being used is incorrect



### INCORRECT DAY OF DISPLAY

The waste was displayed on a different day than the day on the calendar





## COLLECTION CENTER/FORMER ECOLOGICAL PLATFORM



The **Collection Center (Former Ecological Platform)** is an equipped and guarded area where citizens can bring **waste that is not collected through door-to-door service.**

### HOW TO ENTER

Take waste to the Collection Centers (formerly ecological platforms). Yes, great way to do some housekeeping. But then you find yourself in front of the gate wondering: but how do you get in?

The rules are simple:

\* **Residents** who pay the TARI because they own a home, must use their **Regional/National Health Card (CRS/CNS)** to enter the collection center.

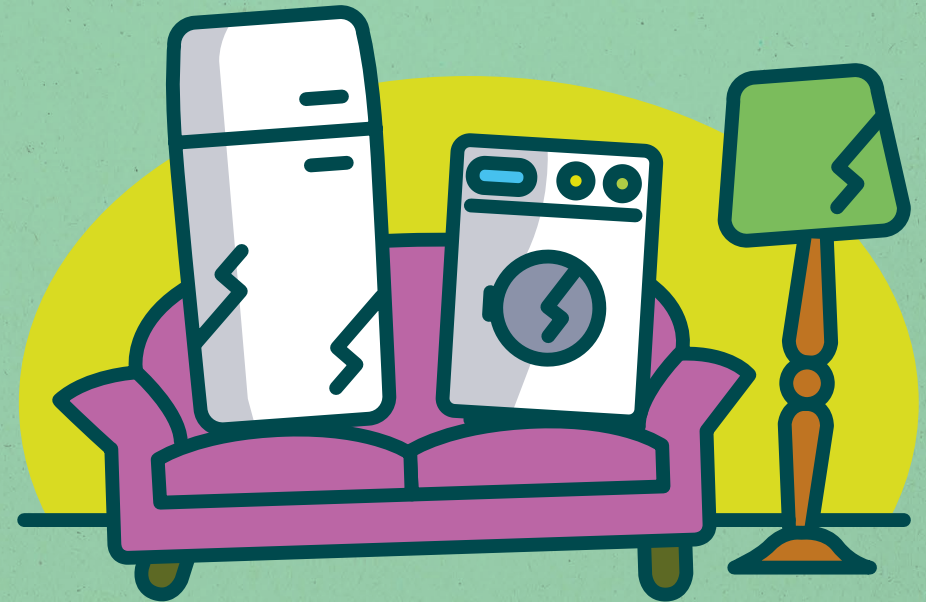
\* **Business owners or property owners who do not live on this property**, must use the **CEM Card** that is cosigned by the municipality to enter the Collection Center.

As for **information about the Collection Center** (opening hours and days) is concerned, you can find everything in the **collection calendar** that CEM delivers at the beginning of the year or that you can download online from [www.cemambiente.it](http://www.cemambiente.it). All useful info can also be found on the CEM Ambiente App.

### WHAT YOU CAN BRING

- BULKY WASTE - PLANT WASTE FROM GARDENING - WOOD
- FERROUS SCRAPS - PAPER AND CARDBOARD - BULKY STYROFOAM
- RUBBLE AND AGGREGATES - GLASS IN SHEETS - WEEE (HOUSEHOLD APPLIANCES, TVS AND MONITORS, LAMPS AND LIGHT BULBS), PAINTS, AEROSOL CANS, PRINTER TONERS, VEGETABLE AND ANIMAL OILS AND FATS, LUBRICATING OILS, BATTERIES AND BATTERIES.

# Bulky "guests"?



## CEM Ambiente will get rid of them for you!

### NEW! BULKY WASTE HOME PICKUP SERVICE EXPANDS AND GROWS IN THE AREA

The bulky waste pickup service managed by CEM Ambiente is active in the **69 member municipalities** that have subscribed to it (excluding the municipalities of Aicurzio, Inzago and Comazzo, which manage the service independently). Each user is entitled to 2 pickup services per year by **booking them** at the **CEM Ambiente toll-free number**. Bulky items must be left at the roadside on the agreed days and modalities.

✓ **Bulky items are:** mattresses, bed frames, furniture already disassembled, large household appliances, sofas, armchairs, doors, blinds, WEEE waste (television sets, monitors, computers, printers...)

✗ **The following are NOT considered bulky** (and therefore will not be picked up): rubble, drywall, tires, hazardous waste (paint, motor oil, car batteries, toner, chemicals, asbestos sheets...), liquid waste (vegetable oil), canisters, vegetable waste (brushwood...), bituminous sheaths, fire extinguishers, bags or other with undifferentiated waste, waste that is already part of door-to-door collection (paper, plastic, glass...)

[www.cemambiente.it/ingombranti](http://www.cemambiente.it/ingombranti)



**BULKY WASTE COLLECTION**

Toll-free number  
**800-342-266**



Daily Sustainable



# Why separate waste collection?

## QUALITY OVER QUANTITY

**Separate waste collection is a duty of every responsible citizen** but it is also an obligation required by law (DIs 152/2006 and subsequent amendments).

**Numerous benefits** are obtained from separate waste collection.



Making separate waste collection a good daily habit is the duty of every citizen.

Without forgetting that, nowadays, it is no longer just a matter of quantity of waste recovered but also and above all of the quality of the waste.

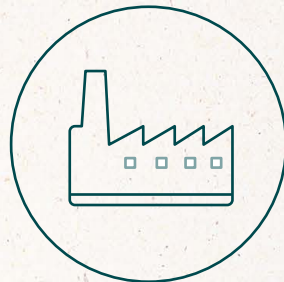
**Here are the main benefits of good separate waste collection**



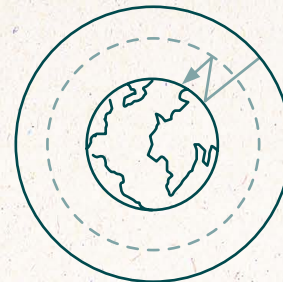
Waste collected separately and recycled **turns back into "raw" materials** ready to be **processed and reused**.



The virtuous waste cycle allows for **more efficient use of resources** meaning energy and water.



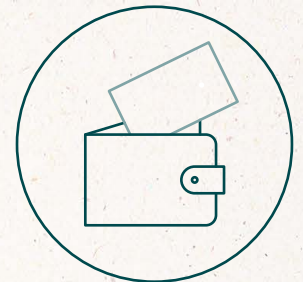
Efficient household waste collection makes it possible to **reduce the amount of waste taken to waste-to-energy plants**.



Compliance with collection rules also results in **reduced greenhouse gas emissions**.



Municipalities that collect more and better are also rewarded by the various consortia with **economic incentives**.



Thanks to good separate collection it is also possible to **contain the overall cost the waste disposal service**.



# Do the right thing

## SOME RULES TO REMEMBER



Follow all the directions on the Calendar **for proper recycling collection.**



Sort your waste well before taking it to the **Collection Center.**



Respect the **rules** of the **Collection Center**: do not rummage or pick up materials.



Respect parking bans for **street washing.**



Use **street bins** only for small waste.



Do not **abandon anything on the streets**. Illegal dumping is a cost to the community.

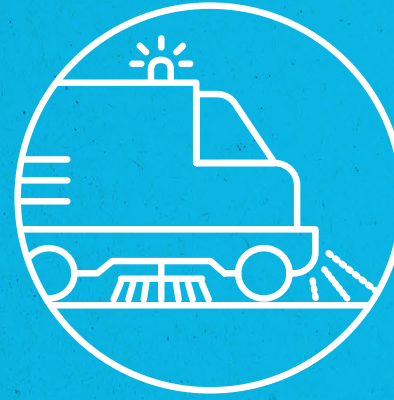


**Don't throw** cigarette butts, chewing gum, wrappers, cans or other small trash on the ground.



Always pick up your **dog waste** with the appropriate tools.

## CITY CLEANING



# Street cleaning

### Not only waste collection.

CEM Ambiente, in fact, also takes care of the cleaning services in its municipalities with its **street cleaning service**.

Thanks to this activity, the dirt collected during the cleaning of city streets is taken to the treatment plant in Liscate (MI) where a large part of the collected materials, about **98 %** (2022 figure), **returns to use**, mostly as gravel that can be used in the construction industry.

Street cleaning is a service that is carried out by CEM Ambiente through the use of increasingly **environmentally friendly and sustainable vehicles**: electric **blowers** with **reduced noise and environmental impact** and the new **Euro6 vacuum sweepers**.



# CEM CONTACTS

Toll-free number  
**800-342-266**

[www.cemambiente.it](http://www.cemambiente.it)

**CEM AMBIENTE APP**



Daily Sustainable